

Relation of α -Amylase Activity with Glucose and Anti-Gliadin IgA and IgG in Sera of Patients with Celiac Disease

Sura A. Al-Emami ^{*1}, Aliaa H. Faraj* and Dahlia M.R. Al-Abadi*

* Department of Chemistry , College of Science, Al-Mustansiriyah University ,Baghdad,Iraq.

Abstract

Celiac disease (CD) is an inflammatory small intestinal disorder that can lead to severe villous atrophy, and malabsorption . Since the measurement of α -amylase activity is the most widely used biochemical test for the diagnosis of pancreatic and non pancreatic disease , therefore serum α -amylase were studied in the present study in an attempt to evaluate the usefulness of this enzyme in the diagnosis of celiac disease and its relationship with anti gliadin IgA and IgG and serum glucose . Thirty one patients with celiac disease were studied and compared with twenty four healthy individuals . Significant elevation of α -amylase activity , glucose and anti gliadin IgA and IgG were observed in the sera of patients with celiac disease compared with the control group . Also a significant positive correlation between α -amylase activity and anti gliadin IgG were found in the present study in the sera of patients with celiac disease while a non significant correlation were found between α -amylase activity and anti gliadin IgA and glucose in the sera of the same patients of celiac disease.

Keywords:- α -amylase , anti – gliadin IgA , IgG , glucose , celiac disease .

الخلاصة

داء الاحتشاء هو التهاب يحدث نتيجة خلل معوي صغير، من الممكن ان يؤدي إلى حدوث ضمور زغابي شديد وسوء امتصاص . ولكون قياس فعالية الفا – اميليز يعد من أكثر الفحوص الكيميائية الحيوية استخداما لتشخيص الأمراض البنكرياسية وغير البنكرياسية , لذا فقد تم قياس هذا الأنزيم في الدراسة الحالية في محاولة لتقدير إمكانية استخدام الفا- اميليز في تشخيص مرض الاحتشاء وعلاقته بكلوز مصل الدم ومضادات الكلايين IgG , IgA , حيث تضمنت الدراسة الحالية جمع ٣١ عينة من مرضى المصابين بداء الاحتشاء ومقارنتها بـ ٢٤ عينة من الأشخاص الأصحاء . أظهرت النتائج وجود زيادة معنوية في فعالية الفا - اميليز ومستوى كل من الكلوز ومضادات الكلايين IgG , IgA في مصول دم المصابين بداء الاحتشاء مقارنة مع مستوياتها في مصول دم الأصحاء وقد تبين أيضا وجود علاقة ايجابية معنوية بين فعالية الفا- اميليز ومضاد IgG في مصول دم المصابين بداء الاحتشاء في حين تبين عدم وجود علاقة معنوية بين فعالية الفا- اميليز وكل من الكلوز ومضاد IgA في مصول دم المصابين بداء الاحتشاء .

Introduction

Celiac disease (CD) , also known as celiac sprue or gluten - sensitive enteropathy^{(1),(2)}. Is the most common life – long food sensitive enteropathy in humans , is characterized by malabsorption , chronic inflammation of small intestine mucosa , villous atrophy and crypt hyperplasia^{(3),(4),(5)} . Currently , the onset of celiac disease is considered to result from interaction between environmental factors , gluten as important genetic predisposition and immune system hyperactivity⁽⁶⁾ . The disease can clinically manifest at any age , most commonly in the first few years of life , a few months of introducing gluten in diet⁽⁷⁾. About 20% of cases occur in patients who are older than 60 years of age⁽⁸⁾. Celiac disease may be associated with a wide range of disease^(1,9), including thyroid dermatological , lympho proliferative disorders , and immune disorders^(1,10,11). Furthermore , there is a greater

than expected prevalence of immune disorders in CD patients as well as of CD in patients with autoimmune diseases^{(12),(13)} . Celiac disease is diagnosed by abnormal blood tests and an abnormal appearing intestine on biopsy and symptoms that resolve with a gluten free diet^(14,15) . Testing sera for IgA or IgG immunoreactivity to gliadin is usually one of the first steps in the complex process of diagnosing gluten intolerance⁽¹⁶⁾. Among laboratory tests , measurement of α -amylase (EC:3.2.1.1) is the test most widely used in the diagnosis of pancreatic and non pancreatic diseases⁽¹⁷⁾. The serum amylase concentration reflects the balance between the rates of amylase entry into and removal from the blood⁽¹⁸⁾. α -Amylase is an enzyme that hydrolyses alpha- bonds of large alpha – linked poly saccharides such as starch and glycogen , yielding glucose and maltose⁽¹⁹⁾.

1Corresponding author E- mail : Sura742004 @ yahoo.com

Received : 24/11/2010

Accepted : 30/4/2011

It is the major form of amylase found in humans and other mammals⁽²⁰⁾. Amylase is most prominent in pancreatic juice and saliva, each of which having its own isoform of human α -amylase⁽¹⁹⁾. Conflicting data have been reported in previous studies for α -amylase activity in patients with Celiac disease. Some of these data reported elevated levels of serum amylase^{(21),(22)}. While others pointed out that patients with CD have low amylase values⁽²³⁾. The aim of this study was to evaluate the serum concentrations of α -amylase and its correlation with glucose and anti gliadin IgA and IgG antibodies in celiac disease.

Subjects and Methods

Subjects

Thirty one patients (15 male their age 2-50 within mean 14 year and 16 female their age 2-42 within mean 10 year) were involved in this study. The patients were referred to Al-Uarmook Teaching Hospital and Al-Kadhimiya Teaching Hospital, Baghdad, Iraq., diagnosed by Dr. Saad Alsadoon and Dr. Fathel Alabodi. All patients with CD were diagnosed depend on symptoms of diarrhea, weight loss, anemia, and serologic examination by (anti-gliadin IgA and IgG). No other diseases associated with CD in those patients. They were all underwent free diet treatment without any drugs. As a control, 24 age and gender matches healthy individual were included in the present study.

Serum Sampling

Five milliliters of samples of venous blood were taken in fasting state and left for 10 minutes at room temperature. After blood coagulation, the sera were separated by centrifugation at 3000 rpm for 10 minutes and then sera stored at -20°C until being used. Hemolyzed samples were discarded.

Methods

Determination of anti gliadin IgA and IgG

Serum concentration of anti-gliadin IgA and IgG were measured by double antibody technique using enzyme-linked immunosorbent assay (ELISA), Biohit Oyi, Finland^{(24),(25)}.

Determination of α -amylase activity

The activity of serum α -amylase was determined by colorimetric method⁽²⁶⁾.

Determination of protein concentration

The total serum protein concentration was determined by Biuret method using total protein kit, Biolab, France⁽²⁷⁾.

Determination of Glucose

The serum concentration of glucose was measured by enzymatic colorimetric using glucose kit⁽²⁸⁾.

Statistical Analysis

Data were analyzed using spss (version 10.0). The results are expressed as mean \pm standard deviation (SD). Statistical and correlation analysis were undertaken using t-test, and Pearson's correlation coefficients. Values of $P < 0.05$ were considered significant.

Results

The concentration of anti-gliadin IgA and IgG were measured in the present study in the sera of control and patients with celiac disease by double antibody technique. The mean values presented in Table (1) reflect a highly significant increase in the serum levels of anti-gliadin IgG ($p < 0.001$) and IgA ($p < 0.001$) in patients with CD compared with those of the control group. The activity of serum α -amylase was determined using Caraway method. In order to calculate the specific activity of the enzyme, total protein concentration was measured in the sera of the studied groups, using Biuret method. A non significant increase ($p > 0.05$) in protein levels was observed in the present study in sera of patients with CD in comparison with that of the control group, Table (2). When the mean values of both activity and specific activity of α -amylase in sera of patients with CD was compared with that of the control group, the results (Table 3) reflected a highly significant increase in activity ($P < 0.001$) and specific activity ($P < 0.01$). The serum concentration of glucose was measured throughout this study in the sera of control and patient groups using enzymatic method. The result presented in Table(4) shows a significant increase ($P < 0.01$) in glucose levels in sera of patients with CD in comparison with that of the control group. Upon analysis of the overall results of the present study, it was found a significant positive correlation ($r = 0.709$, $P < 0.05$) between α -amylase activity and anti-gliadin IgG in the sera of patients with celiac disease (54%) who have increase in their α -amylase activity Figure (1). While a non significant correlation ($P > 0.05$) between α -amylase and anti-gliadin IgA and glucose were found in the sera of the same patients with CD.

Table 1 : Serum anti- gliadin IgG and IgA levels in control and patients with celiac disease .

	Groups	Sample number(n)	Range (Au)	Mean (Au) ± Standard Deviation	P value
IgG	Control patients with CD	24	7.6-30.1	17.31 ± 8.63	P<0.001
		31	15.0-204.1	77.90 ± 48.02	
IgA	Control patients with CD	24	7.1-32.5	15.68 ± 10.154	P<0.001
		31	10-192.1	62.83 ± 57.6	

Table 2 : Total protein concentration in the sera of control and patients with celiac disease .

Group	Samples number (n)	Range mg/dl	Mean mg/dl ± Standard Deviation	P value
Control	24	6.7-8.9	7.65±0.78	P>0.05
Patients with CD	31	5.1-12	7.99±1.77	

Table 3 : Mean values of α -amylase activity and specific activity in the sera of control and patients with celiac disease.

Group	Activity U/L		Specific activity U/mg		
	Range	Mean ± Standard deviation	Range	Mean	Standard deviation
Control 24	74.0-175.60	126.10±45.01	0.94-2.62	1.699	0.74
Patients with CD 31	35.3-268.78	174.18* ±60.06	0.24-9.60	2.578**	1.64

*significant increase in amylase activity with P<0.001.

** significant increase in amylase specific activity with P<0.01.

Table 4 : Mean values of glucose levels in the sera of control and patients with celiac disease

Group	Samples number (n)	Range mg/dl	Mean mg/dl ± Standard deviation	P value
Control	24	60-79.2	70.1 ± 8.11	P<0.001
Patients with CD	31	22.2-234	102.26 ±50.41	

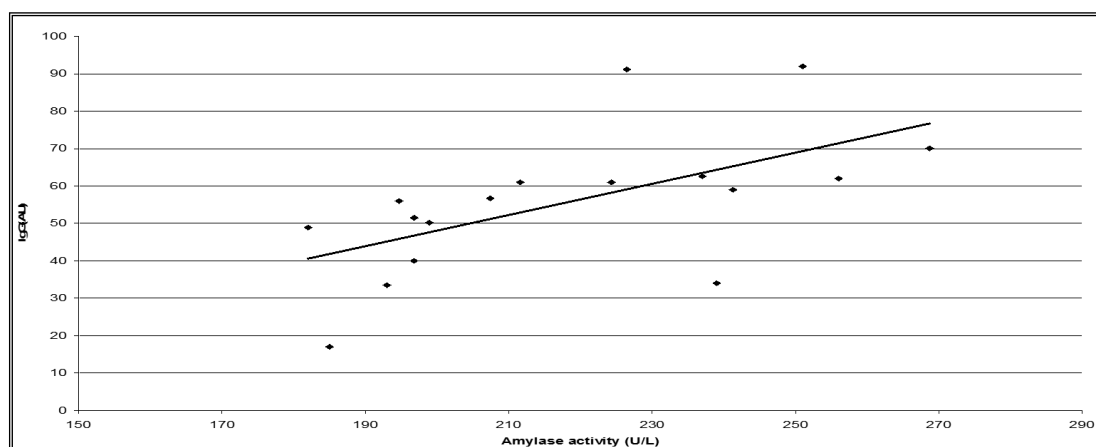


Figure 1 : The correlation between α -amylase activity and anti- gliadin IgG in sera of patients with celiac disease ($r=0.709,P<0.05$).

Discussion

It is well known that gliadin is directly or indirectly through immune mediated reactions, toxic to small bowel mucosa of relatively small population of genetically predisposed individuals who under this toxic action develop celiac disease^{(12),(29)}. Testing sera for IgA or IgG immunoreactivity to gliadin is usually one of the first steps in the complex process of diagnosing gluten intolerance, because it is well known that antibodies to native gliadin sequences are present in patients with celiac disease^{(30),(31),(32)}. In the present study anti – gliadin IgA and IgG measurements (Table 1) shows a presence of a significant increase of anti – gliadin IgA and IgG in sera of patients with CD. Celiac disease is an autoimmune disorder that can coexist with other diseases, such as diabetes mellitus type 1, thyroid gland diseases, and Sjogren's Syndrome⁽⁷⁾. Through this study fasting serum glucose was measured and highly significant increase of its was observed in the patients with CD in comparison with that of the control group. This was in agreement with the result obtained by Galicka latala D. et. al. who reported that hyperglycemia and problems with glucose balance in the serum of patients with celiac disease were observed⁽³³⁾. While this result was disagreement with the result obtained by Tourniaire J. et. al. who reported that intolerance to gluten can disrupt glucose regulation leading to greater risk of hypoglycaemia⁽³⁴⁾. Throughout this study highly significant increase ($P < 0.001$) in both activity and specific activity of α -amylase in sera of patients with CD. This is in agreement with the result obtained by Oita T. et. al. who reported that patients with celiac disease showed persistently elevated levels of serum amylase and lipase⁽²¹⁾. Carroccio A. et. al. demonstrated a frequency of about 25% of elevated pancreatic enzymes (amylase, lipase, trypsin, and elastase) values in CD patients⁽²²⁾. While the present study result was disagreement with the result that obtained by Disantagnese P. who reported that patients with celiac disease tend as a group to have low amylase values⁽²³⁾. The elevated levels of amylase can result either from an increased rate of entry of amylase into circulation and/or a decreased metabolic clearance of this enzyme due to renal failure or macroamylase (a condition in which an abnormally high – molecular – weight amylase is present in the serum)⁽¹⁸⁾. Torrent Vernetta A. et. al. reported that macroamylaseaemia most often formed due the binding of the amylase to an immunoglobulin and it has been described as a causal finding associated to abdominal pain

and to celiac disease⁽³⁵⁾. Oita T. et. al. demonstrated that Immunoprecipitation assay showed that amylase was bound to poly clonal IgA and IgG⁽²¹⁾. No differences were found, when either the enzyme activity values or the enzyme specific activity values were used at comparison between control and patients with CD since this is due to the non significant difference in the measured protein concentration between control and patients (Table 2). A significant positive correlation ($P < 0.05$, $r = 0.709$) was found in the present study between α -amylase activity and anti-gliadin IgG in the sera of patients with CD who have increased levels in α -amylase activity while a non significant correlation ($P < 0.05$) were found between α -amylase and fasting serum glucose and anti gliadin IgA in the same patients with CD.

Conclusions

From the results that had been obtained it conclude a significant positive correlation between α -amylase activity and anti- gliadin IgG in the sera of patients with CD who have elevated in enzyme activity. This finding would appear to suggest a possibility to use the amylase activity as a tool with anti- gliadin IgG for diagnosis of celiac disease.

Acknowledgment

The authors gratefully acknowledged the staff of Al-Uarmook Teaching Hospital and Al-Kadhimiya Teaching Hospital for making patients specimens available for this study.

References

1. Danalioglu A., Poturoglu S., Gungor gulluoglu M., and et. al. Budd-chiari syndrome in a young patient with celiac sprue: A case report. Turk J. Gastroenterol, 2003; 14(4):262-265.
2. Tatham AS, and Shewry PR. Allergens to wheat and related cereals. Clin Exp Allergy. 2008; 38(11):1712-1726.
3. Cook HB., Burt MJ., Collett JA., and et. al. Adult celiac disease: prevalence and clinical significance. J. Gastroenterol Hepatol, 2000; 15: 1032-1036.
4. Farrell RJ. and Kell CP. Celiac sprue. New Eng J. Med 2002; 346:180-188.
5. Schuppan D, Junker Y., and Barisani D. Celiac disease: from pathogenesis to novel therapies. Gastroenterology. 2009; 137(6):1912-1933.
6. Kolacek S., Celiakija, In: Vucelic B., and et. al. Gastroenterologijai hepatologija Zagreb. Medicinska naklada, 2001; 561-573.

7. Pozgaj F. and Metelko Z. Celiac disease and diabetes mellitus . *Diabetologica* 2003; 32(4): 157-161.
8. Hankey GL, and Holmes GK. Coeliac disease in the elderly *Gut* 1994 ;35:65-67.
9. Koop I , Iichmann R., Izzi L. ,and et. al. .Detection of autoantibodies against tissue transglutaminase in patients with celiac disease and dermatitis herpetiformis. *Am. J. Gastroenterol* 2000; 95:2009-2014.
10. Collin P., Salmi J., Hallstrom O. , and et. al. High frequency of coeliac disease in adult patients with type 1 diabetes . *Scand J Gastroenterol* 1989; 24:81-84.
11. Pocecco M., and Venture A. Coeliac disease and insuline – dependent diabetes mellitus :a causal association . An Italian multicentre study . *Acta paediatr* 1995; 84:1432-1433.
12. Presutti RJ., Cangemi JR. , Cassidy HD., and Hill DA. Celiac disease . *Am - Fam - Physician* 2007; 76 (12):1795-1802.
13. Volta U, and Villanacci V. Celiac disease: diagnostic criteria in progress. *Cell Mol Immunol.* 2011;8(2):96-102.
14. John Presutti R., Gangemi JR., and Cassidy HD. Celiac Disease. *Am Fam Physician.*2007;76(12):1795-1802.
15. Makovicky P., and Rimarova K. The importance of and options available for screening of celiac disease. *Vnitř Lek.*2011;57(2):183-187.
16. Konic – Ristic A. , Dodig D. ,Krstic R. , and et. al. Different levels of humoral immune reactivity to different wheat cultivars gliadin are present in patients with celiac disease and in patients with multiple myeloma. *BMC Immunol* 2009; 10(32):1186-1203.
17. Tietz NW. , Huang WY. , Rauh DF. , Shuey DF. Laboratory Tests in the Differential Diagnosis of Hyperamylasemia . *Clin. Chem.* 1986; 32(2): 301-307.
18. Pieper- Bigelow C., Strocchi A. , and Levitt MD. Where does serum amylase come from and wher does it go ? . *Gastroenterol Clin. North Am.* 1990; 19(4):793-810.
19. Maureen Barlow Pugh . “ Stedman’s Medical Dictionary”,2000; 27thed. Baltimore , Maryland . USA : lippincott Williams and wilkins , p 65.
20. Voet D. , and Voet JG. “Biochemistry”,2005; 2nd ed., Bruxelles : De Boeck , P. 1583.
21. Oita T, Yamashiro A. , Mizutani f. and et. al. Simultaneous presence of macroamylase and macrolipase in a patient with celiac disease . *Rinsho Byori* . 2003; 51(10):974-977.
22. Carroccio A., Diprma L. , Scalici C. and et. al. .Unexplained elevated serum pancreatic enzymes : a reason to suspect celiac disease. *Clin Gastroenterol Hepatol* . 2006 ; 4(4): 455-459.
23. Disantagnese PA. Idiopathic celiac disease :II. Course and Prognosis. *Pediatrice* 1953; 11:224-237.
24. Stoehlberg MR. , Savilahti E., and Viander M. Antibodies to gliadin by ELISA as screening test for childhood celiac disease . *Journal of pediatric Gastroenterology* 1986; 5:726-729.
25. McMillan SA. , Haughton DJ. , Biggart JD., and et. al. Predictive value for celiac disease of antibodies to gliadin endomysium , and jejunum patients attending for jejunal biopsy. *BMJ* 1991; 303:1163-1165.
26. Caraway wt. .A stable starch substrate for the determination of amylase in serum and other body fluids . *Am. J.Clin . Path* 1959; 32:97-99.
27. Burtis C.A. , Silvean ER. and Christensen LM. *Tietz Text book of clinical chemistry* 1995 ; 3rd ed., pp. 523-524.
28. Passing H., and Bablok W. A new Biometrical procedure for Testing the Equality of Measurements from Two Different Analytical Methods . *J Clin Chem. Clin Biochem.* 1983; 21:709-720.
29. Setty M., Hormazal L., and Guandalini S. Celiac disease : risk assessment, diagnosis, and monitoring. *Mol Diagn Ther.*2008;12(5):289-298.
30. Mothes T., Uhlig HH. , and Richter T. Recent aspects of antibody determination for the diagnosis of coeliac disease . *Dtsch Med Wochenschr* . 2009; 134(3):1525-1528.
31. Caja S, Maki M., Kaukinen K., and *et.al.* Antibodies in celiac disease: implications beyond diagnostics. *Cell Mol Immunol* 2011;8(2):103-109.
32. Ortiz M., Frago A., and OSullivan CK. Detection of Antigliadin Autoantibodies in Celiac Patients Samples Using a Cyclodextrin-Based Supramolecular Biosensor. *Anal Chem.* 2011; 28. (Epub ahead of print).

- 33.** Galicka – Latala D., Zwolinska- Wcislo M., Sosin – Rundnicka L. and Rozpondek P. The role of celiac disease and type 1 diabetes coexistence . Is celiac disease responsible for diabetic status . *Przegl Lek* . 2009; 66(4):170-175.
- 34.** Tourniaire J, Guichard-Rode S.and Moniet JC. Circulating anti gliadin antibodies . Prevalance in a diabetic (type 1 or 2)and non diabetic adult population . *Press Med* . 1995; 24(31):1425-1427.
- 35.** Torrent Vernetta A., Segarra Canton O., Soler Palacin P.and *et. al.* Macroamylasaemia in paediatrics . *An Pediatr (Barc)*. 2008; 69(5):439-441.